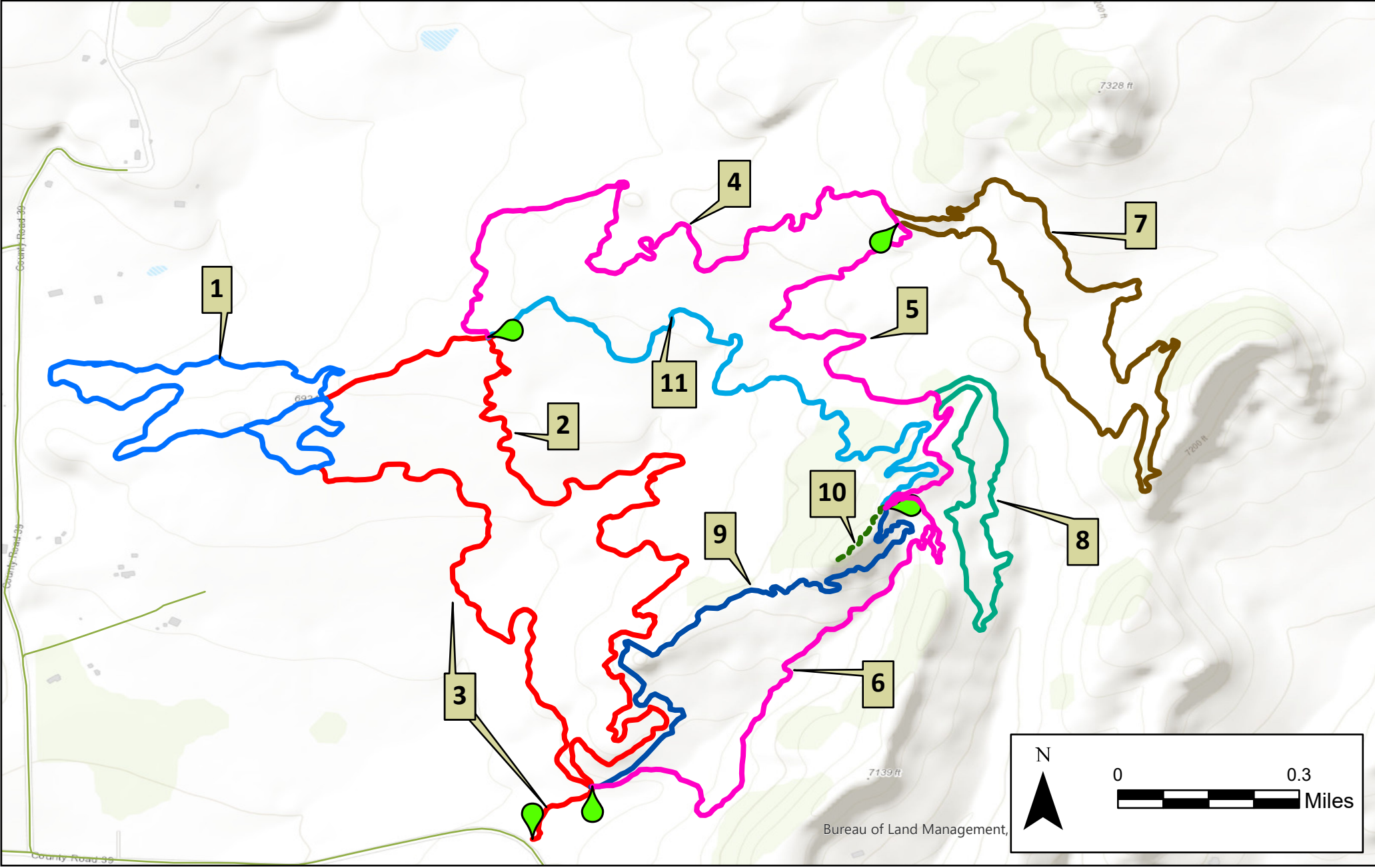


Aqueduct Trail Segments



1		Moonscape and Bivalve Sections	1.41 Mile
2		Evenflow - Rim, Retention, Flow Sections	1.91 Mile
3		Evenflow - Swale + Discharge	1.03 Mile
4		Ridges - Regulator	1.21 Mile
5		Ridges - Tightline	0.95 Mile
6		Ridges - Separation	0.95 Mile
7		Mountainview	1.80 Mile
8		Pump Station	1.02 Mile
9		Riprap	1.01 Mile
10		Overlook (hiking only)	0.10 Mile
11		Crosscut	1.17 Mile